



Late. Mhatarba Laxman Pa. Aher Pratishthan's

SITAI ART'S, COMMERCE AND SCIENCE COLLEGE

At-Kurkundi, Post-Ghargoan Ta: Sangamner Dist: Ahmednagar (Maharashtra)

Approved by- Govt. of Maharashtra

Affiliated to Savitribai Phule Pune University



CRITERION 7

7.1.3 INSTITUTIONAL VALUES AND SOCIAL RESPONSIBILITIES



Principal

Sitai Art's, Commerce & Science College
At Kurkundi, Po. Ghargaon, Tal. Sangamner, Dist. A'Nagar



Late. Mhatarba Laxman Pa. Aher Pratishthan's

SITAI ART'S, COMMERCE AND SCIENCE COLLEGE

At-Kurkundi, Post-Ghargoan Ta: Sangamner Dist: Ahmednagar (Maharashtra)

Approved by- Govt. of Maharashtra

Affiliated to Savitribai Phule Pune University



- 7.1.3. Quality audits on environment and energy regularly undertaken by the Institution. The institutional environment and energy initiatives are confirmed through the following 1. Green audit / Environment audit 2. Energy audit 3. Clean and green campus initiatives 4. Beyond the campus environmental promotion activities

7.13 Index

Sr. No.	Particulars
1.	Energy, Green and Environment Audit Reports
2.	Energy, Green and Environment Audit Certificates 2018-19
3.	Energy, Green and Environment Audit Certificates 2020-19
4.	Energy, Green and Environment Audit Certificates 2021-20
5.	Energy, Green and Environment Audit Certificates 2022-21
6.	Energy, Green and Environment Audit Certificates 2023-22
7.	Green Campus Policy
8.	Photos of Green and Clean Campus
9.	Beyond the campus environmental promotion activities



[Signature]

Principal

Sitai Art's, Commerce & Science College
At Kurkundi, Po. Ghargoan, Tal. Sangamner, Dist. A'Nagar



Late. Mhatarba Laxman Pa. Aher Pratishthan's
SITAI ART'S, COMMERCE AND SCIENCE COLLEGE
At-Kurkundi, Post-Ghargoan Ta: Sangamner Dist: Ahmednagar (Maharashtra)



Approved by- Govt. of Maharashtra
Affiliated to Savitribai Phule Pune University

GREEN CAMPUS POLICY



Late. Mhatarba Laxman Pa. Aher Pratishthan's
SITAI ART'S, COMMERCE AND SCIENCE COLLEGE
At-Kurkundi, Post-Ghargoan Ta: Sangamner Dist: Ahmednagar (Maharashtra)
Approved by- Govt. of Maharashtra
Affiliated to Savitribai Phule Pune University



Green campus initiatives

A Green Campus is a place where environmental friendly practices and education combine to promote sustainable and eco-friendly practices in the campus.

The institutional initiatives for greening the campus are as follows:

- | | |
|--------------------------------------|-----|
| 1. Restricted entry of automobiles | yes |
| 2. Ban on use of Plastic | yes |
| 3. Landscaping with trees and plants | yes |

Content

1. Green Campus Policy
2. Notice for Proper Parking During Exams
3. Notice for ban on use of Plastic
4. Notice for landscaping with trees and plants

Green Campus Policy

Phudare
Principal
Sitai Art's, Commerce & Science College
At Kurkundi, Po. Ghargaon, Tal. Sangamner, Dist. A' Nagar





Late. Mhatarba Laxman Pa. Aher Pratishthan's
SITAI ART'S, COMMERCE AND SCIENCE COLLEGE
At-Kurkundi, Post-Ghargoan Ta: Sangamner Dist: Ahmednagar (Maharashtra)

Approved by- Govt. of Maharashtra
Affiliated to Savitribai Phule Pune University



Late. Mhatarba Laxman Pa. Aher Pratishthan's
SITAI ART'S, COMMERCE AND SCIENCE COLLEGE
At-Kurkundi, Post-Ghargoan Ta: Sangamner Dist: Ahmednagar (Maharashtra)

Approved by- Govt. of Maharashtra
Affiliated to Savitribai Phule Pune University



- 1) Institute will make all the necessary efforts to involve the students, faculty and staff in "Green Campus initiatives by designating the volunteers
- 2) The institute shall set up a committee of active faculty and students interested and working on the agenda of creating green, sustainable and eco-friendly practices in the campus.
- 3) The green committee must look into the various environmental aspects for green technology and green environment. The performance of waste water treatment, waste recycling, rainwater harvesting and other water conservation measures shall also be monitored.
- 4) The objectives of the green committee shall be to reduce water enhance water quality and biodiversity in the campus.
- 5) Save Energy will be the motto of every day's work in the institute so that an eco-friendly environment is created in the campus.
- 6) The organic and inorganic solid waste in the campus shall be collected separately for disposal as per established norms.
- 7) Institute is encouraging the policy of minimizing the use of plastic in the institute premises. Usages of plastic cups are completely banned in college canteen and mess, S. All vehicles must be parked properly during exam days to ensure safety, reduce congestion, and maintain a conducive environment for students.
- 8) Institute observes one day in the session to create awareness for avoiding noise and air pollution.
- 9) The green and environmental awareness would be spread to the nearby community as student's extension activities.



Rhudeel

Principal

Sitai Art's, Commerce & Science College
At Kurkundi, Po. Ghargoan, Tal. Sangamner, Dist. A'Nagar



Late. Mhatarba Laxman Pa. Aher Pratishthan's
SITAI ART'S, COMMERCE AND SCIENCE COLLEGE
At-Kurkundi, Post-Ghargoan Ta: Sangamner Dist: Ahmednagar (Maharashtra)



Approved by- Govt. of Maharashtra
Affiliated to Savitribai Phule Pune University



Late. Mhatarba Laxman Pa. Aher Pratishthan's
SITAI ART'S, COMMERCE AND SCIENCE COLLEGE
At-Kurkundi, Post-Ghargoan Ta: Sangamner Dist: Ahmednagar (Maharashtra)



Approved by- Govt. of Maharashtra
Affiliated to Savitribai Phule Pune University

NOTICE

Ref. No.

Proper Parking During Exams

This is to inform all students, faculty, and staff that during the examination period, it is mandatory to park vehicles in an organized manner in the designated parking area. Proper parking is essential to avoid congestion and ensure a smooth flow of traffic during exams.

Please follow the instructions of the parking attendants and avoid parking in unauthorized spaces. Your cooperation is crucial to maintaining order on the campus during this busy period.



[Signature]
Principal

Sitai Art's, Commerce & Science College
At Kurkundi, Po. Ghargoan, Tal. Sangamner, Dist. A'Nagar



Late. Mhatarba Laxman Pa. Aher Pratishthan's
SITAI ART'S, COMMERCE AND SCIENCE COLLEGE
At-Kurkundi, Post-Ghargoan Ta: Sangamner Dist: Ahmednagar (Maharashtra)



Approved by- Govt. of Maharashtra
Affiliated to Savitribai Phule Pune University

THE PUNE ID: 0666021000 | AFFILIATION NO: PU/BN/AC/S/194/2019 | College Code: 1918



Late. Mhatarba Laxman Pa. Aher Pratishthan's
SITAI ART'S, COMMERCE AND SCIENCE COLLEGE
At-Kurkundi, Post-Ghargoan Ta: Sangamner Dist: Ahmednagar (Maharashtra)



Approved by- Govt. of Maharashtra
Affiliated to Savitribai Phule Pune University

NOTICE

Ref No:

Ban on Use of Plastic

In line with environmental conservation efforts and government regulations, the use of plastic bags and disposable plastic items is strictly banned on the college campus with immediate effect. All students, faculty, and staff are encouraged to use eco-friendly alternatives such as cloth bags, metal or glass containers, etc.

Violators of this policy will face disciplinary action. Let's work together to create a cleaner and greener environment.



Principal
Principal

Sitai Art's, Commerce & Science College
At Kurkundi, Po. Ghargaon, Tal. Sangamner, Dist. A'Nagar



Late. Mhatarba Laxman Pa. Aher Pratishthan's
SITAI ART'S, COMMERCE AND SCIENCE COLLEGE
At-Kurkundi, Post-Ghargoan Ta: Sangamner Dist: Ahmednagar (Maharashtra)



Approved by- Govt. of Maharashtra
Affiliated to Savitribai Phule Pune University



Late. Mhatarba Laxman Pa. Aher Pratishthan's
SITAI ART'S, COMMERCE AND SCIENCE COLLEGE
At-Kurkundi, Post-Ghargoan Ta: Sangamner Dist: Ahmednagar (Maharashtra)



Approved by- Govt. of Maharashtra
Affiliated to Savitribai Phule Pune University

NOTICE

Ref. No.

Landscaping with Trees and Plants

We are pleased to announce that the college will be initiating a landscaping project to enhance the greenery and beautify the campus environment. The project will involve planting trees and plants around the college premises.

All students and staff members are invited to participate in this initiative by contributing to the planting activity, which will take place. Let's make our campus more eco-friendly and visually appealing.



Phule
Principal
Sital Art's, Commerce & Science College
At Kurkundi, Po. Ghargoan, Tal. Sangamner, Dist. A'Nagar



Late. Mhatarba Laxman Pa. Aher Pratishthan's

SITAI ART'S, COMMERCE AND SCIENCE COLLEGE

At-Kurkundi, Post-Ghargoan Ta: Sangamner Dist: Ahmednagar (Maharashtra)

Approved by- Govt. of Maharashtra

Affiliated to Savitribai Phule Pune University



PHOTOS OF GREEN AND CLEAN CAMPUS



Princhaer
Principal

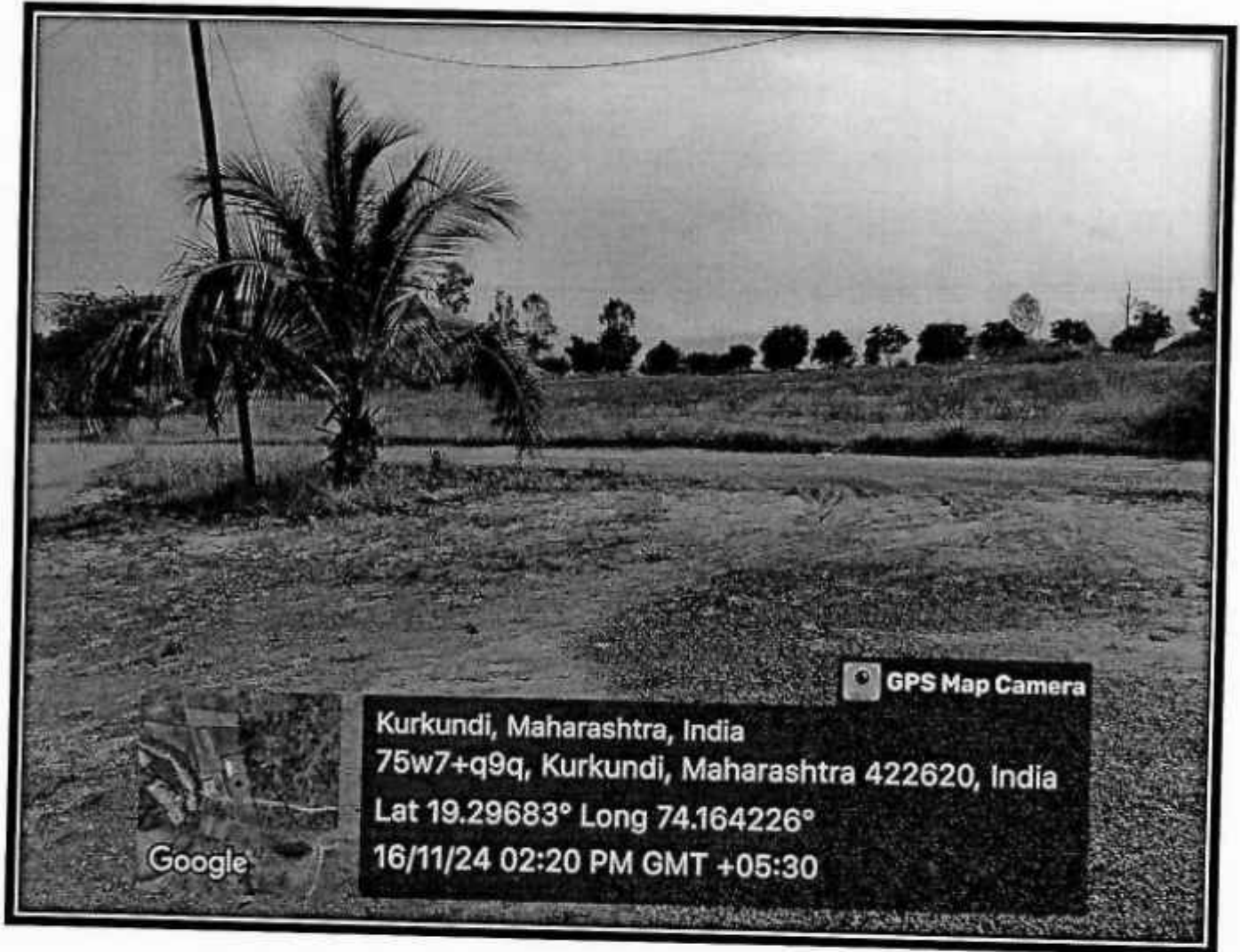
Sitai Art's, Commerce & Science College
At Kurkundi, Po. Ghargaon, Tal. Sangamner, Dist. A' Nagar



Late. Mhatarba Laxman Pa. Aher Pratishthan's
SITAI ART'S, COMMERCE AND SCIENCE COLLEGE

At-Kurkundi, Post-Ghargoan Ta: Sangamner Dist: Ahmednagar (Maharashtra)

Approved by:- Govt. of Maharashtra
Affiliated to Savitribai Phule Pune University



Prudhvi
Principal
Sitai Art's, Commerce & Science College
At Kurkundi, Po. Ghargoan, Tal. Sangamner, Dist. A'Nagar



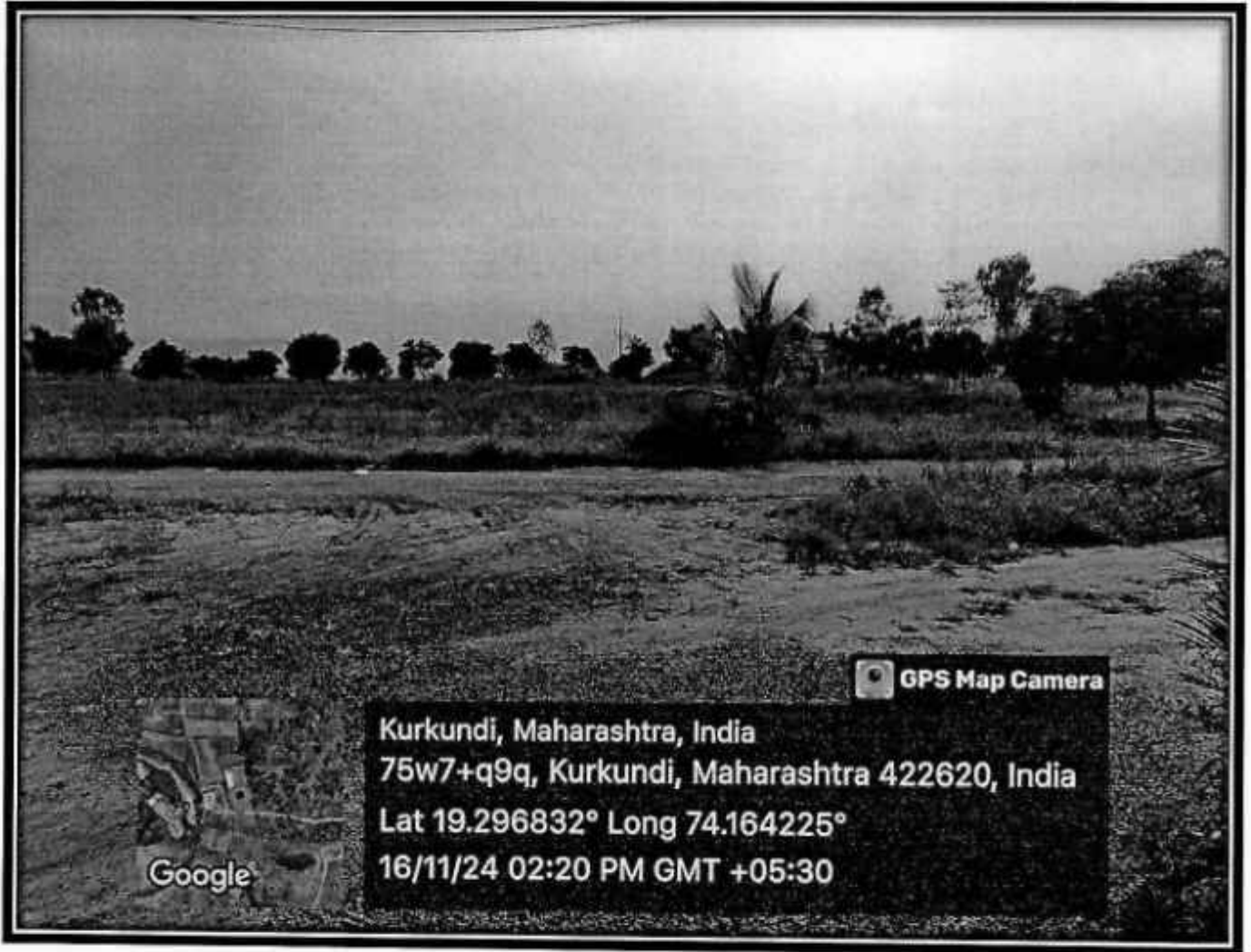
Late. Mhatarba Laxman Pa. Aher Pratishthan's

SITAI ART'S, COMMERCE AND SCIENCE COLLEGE

At-Kurkundi, Post-Ghargoan Ta: Sangamner Dist: Ahmednagar (Maharashtra)

Approved by- Govt. of Maharashtra

Affiliated to Savitribai Phule Pune University



GPS Map Camera

Kurkundi, Maharashtra, India
75w7+q9q, Kurkundi, Maharashtra 422620, India
Lat 19.296832° Long 74.164225°
16/11/24 02:20 PM GMT +05:30

Google



Blachari

Principal

Sitai Art's, Commerce & Science College
At Kurkundi, Po. Ghargaon, Tal. Sangamner, Dist. A'Nagar



Late. Mhatarba Laxman Pa. Aher Pratishthan's

SITAI ART'S, COMMERCE AND SCIENCE COLLEGE

At-Kurkundi, Post-Ghargoan Ta: Sangamner Dist: Ahmednagar (Maharashtra)



Approved by- Govt. of Maharashtra

Affiliated to Savitribai Phule Pune University



Phandaj

Principal

Sitai Art's, Commerce & Science College
At Kurkundi, Po. Ghargoan, Tal. Sangamner, Dist. A'Nagar



Late. Mhatarba Laxman Pa. Aher Pratishthan's

SITAI ART'S, COMMERCE AND SCIENCE COLLEGE

At-Kurkundi, Post-Ghargoan Ta: Sangamner Dist: Ahmednagar (Maharashtra)

Approved by- Govt. of Maharashtra

Affiliated to Savitribai Phule Pune University



R. D. D. D.

Principal

Sitai Art's, Commerce & Science College
At Kurkundi, Po. Ghargoan, Tal. Sangamner, Dist. A' Nagar



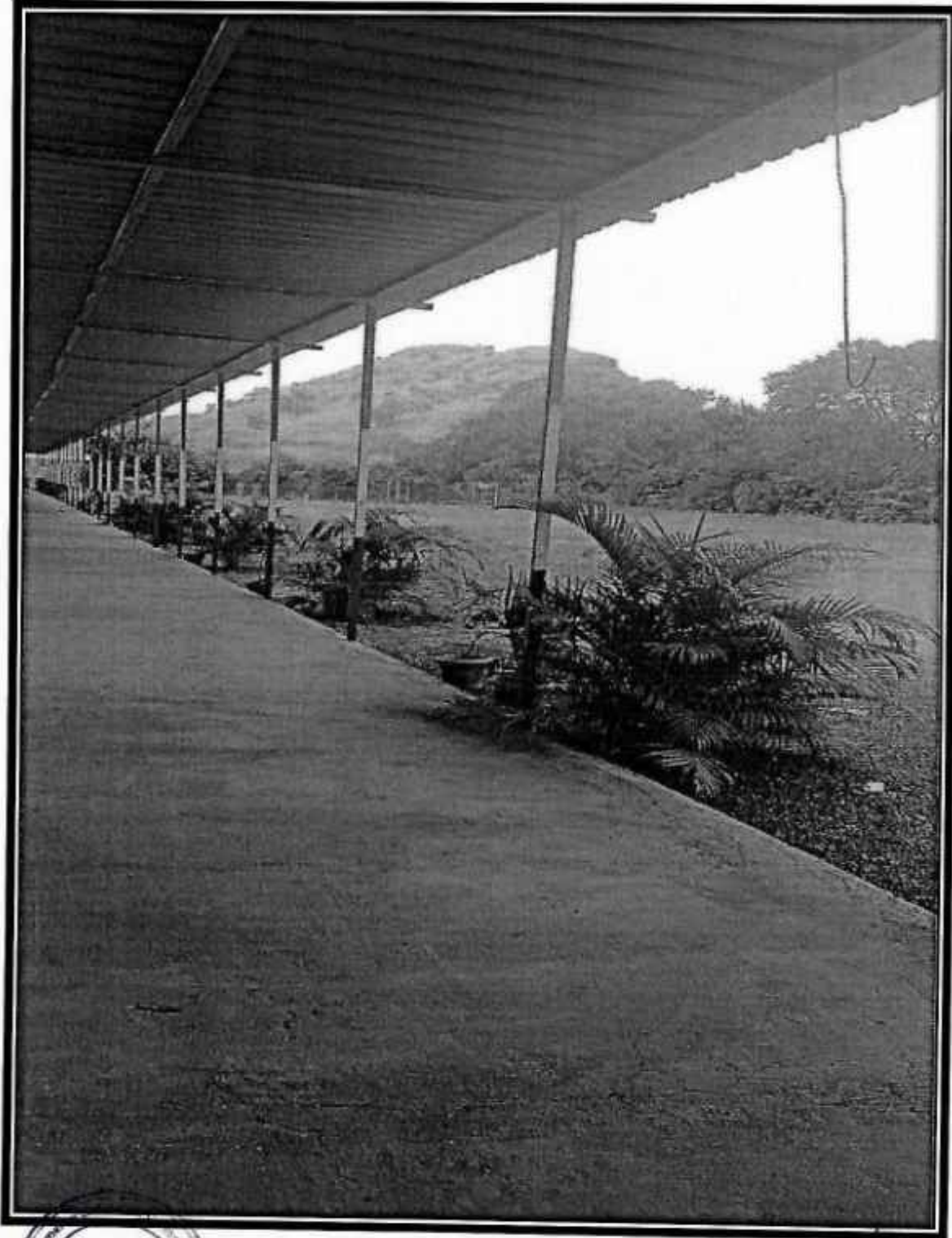
Late. Mhatarba Laxman Pa. Aher Pratishthan's

SITAI ART'S, COMMERCE AND SCIENCE COLLEGE

At-Kurkundi, Post-Ghargoan Ta: Sangamner Dist: Ahmednagar (Maharashtra)

Approved by- Govt. of Maharashtra

Affiliated to Savitribai Phule Pune University



[Signature]
Principal
Sitai Art's, Commerce & Science College
At Kurkundi, Po. Ghargoan, Tal. Sangamner, Dist. A'Nagar



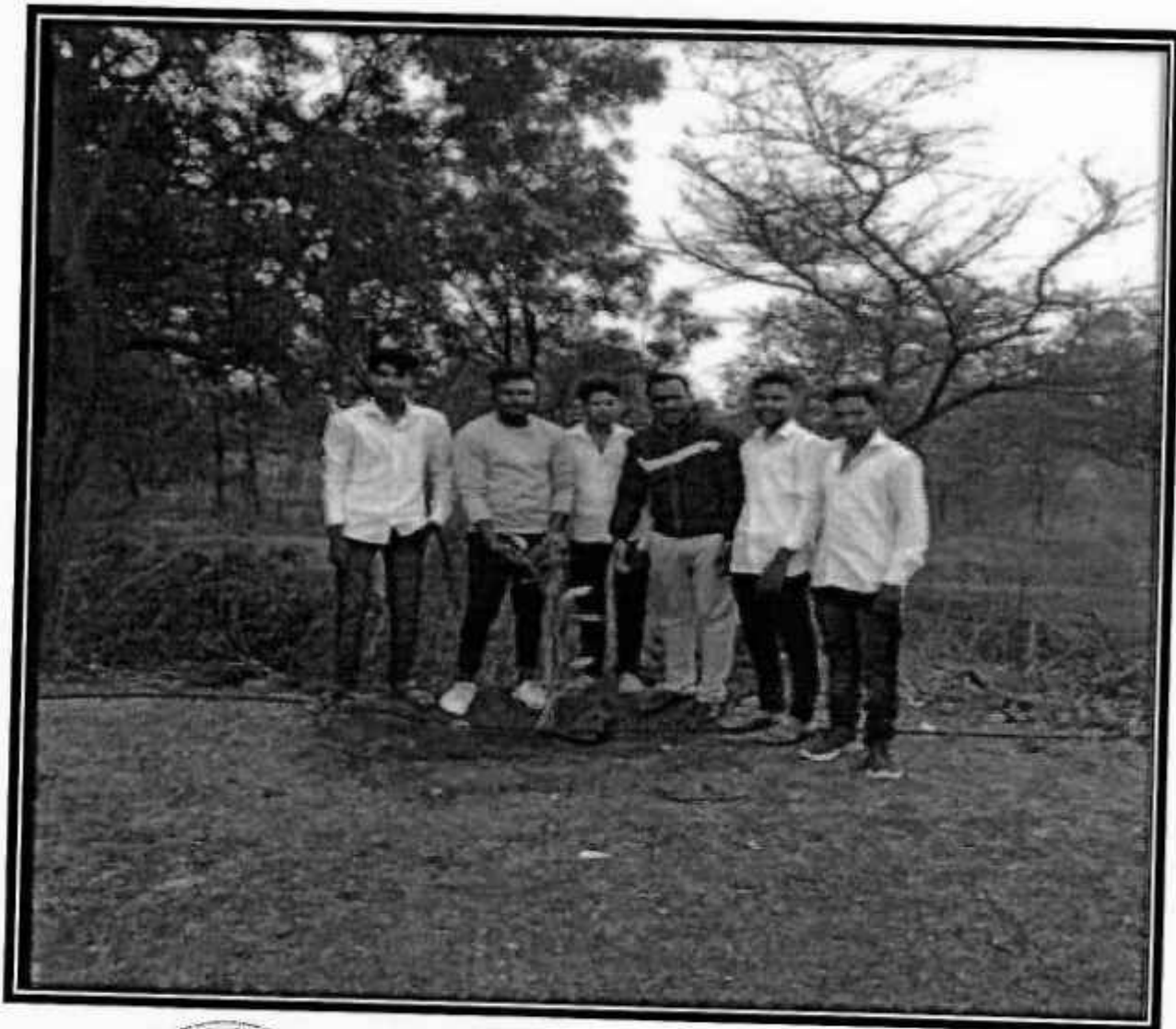
Late. Mhatarba Laxman Pa. Aher Pratishthan's
SITAI ART'S, COMMERCE AND SCIENCE COLLEGE
At-Kurkundi, Post-Ghargoan Ta: Sangamner Dist: Ahmednagar (Maharashtra)



Approved by- Govt. of Maharashtra
Affiliated to Savitribai Phule Pune University

☐ BEYOND THE CAMPUS ENVIRONMENTAL PROMOTION
ACTIVITIES

✦ Tree plantation



Principals
Principal
Sitai Art's, Commerce & Science College
At Kurkundi, Po. Ghargoan, Tal. Sangamner, Dist. A. Nagar



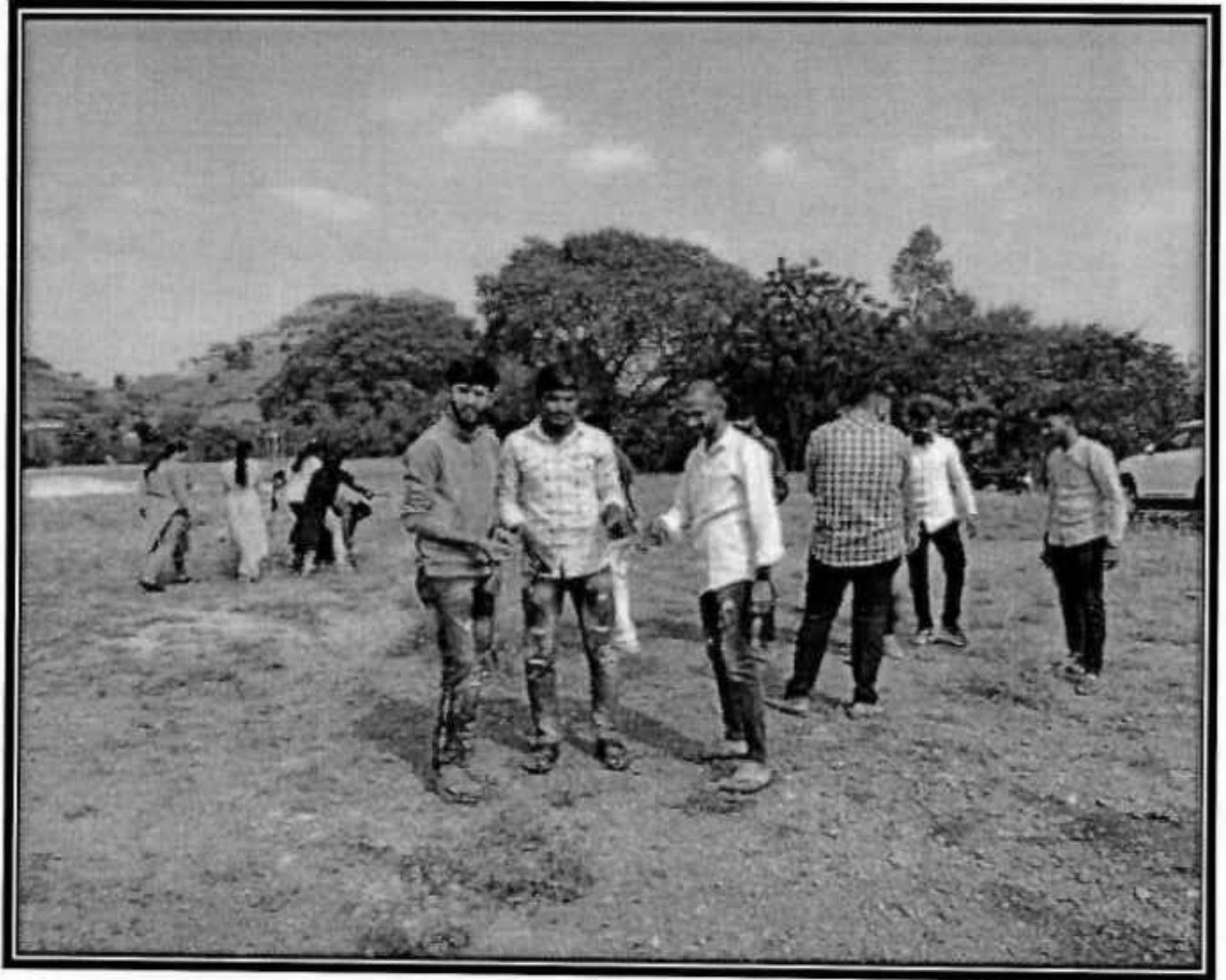
Late. Mhatarba Laxman Pa. Aher Pratishthan's

SITAI ART'S, COMMERCE AND SCIENCE COLLEGE

At-Kurkundi, Post-Ghargoan Ta: Sangamner Dist: Ahmednagar (Maharashtra)

Approved by:- Govt. of Maharashtra

Affiliated to Savitribai Phule Pune University



CLEANLINESS DRIVE



Prudhvi
Principal
Sitai Art's, Commerce & Science College
At Kurkundi, Po. Ghargoan, Tal. Sangamner, Dist. A' Nagar

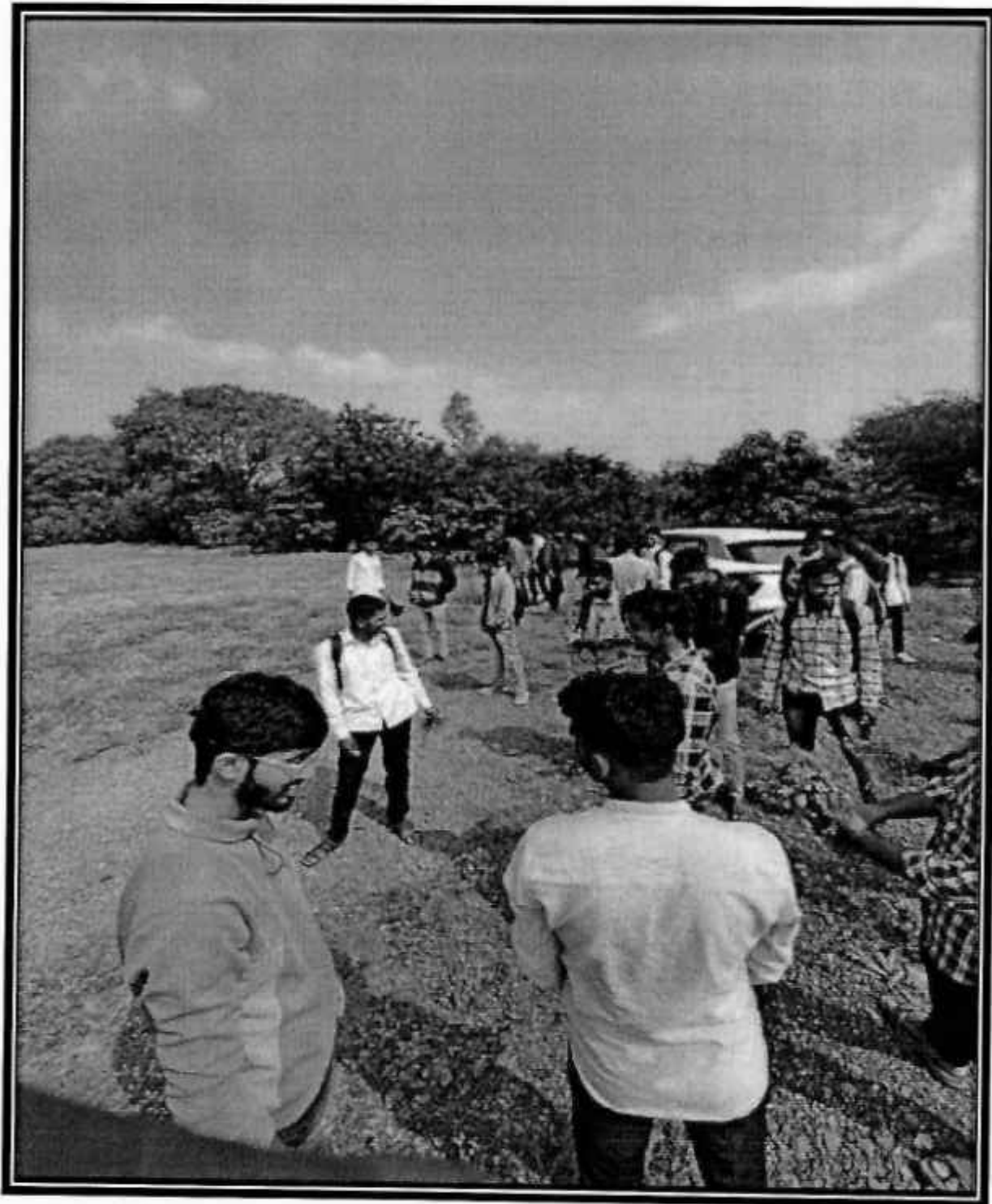


Late. Mhatarba Laxman Pa. Aher Pratishthan's

SITAI ART'S, COMMERCE AND SCIENCE COLLEGE

At-Kurkundi, Post-Ghargoan Ta: Sangamner Dist: Ahmednagar (Maharashtra)

Approved by:- Govt. of Maharashtra
Affiliated to Savitribai Phule Pune University



Principal

Principal

Sitai Art's, Commerce & Science College
At Kurkundi, Po. Ghargoan, Tal. Sangamner, Dist. A'Nagar

Atkurkundi, Post-Chargaon, Tal. Sangamner, Dist. Ahmednagar

Sitai Art's, Commerce & Science College

Principal

(Signature)



Late. Mhatarba Laxman Pa. Aher Pratishthan's
SITAI ART'S, COMMERCE AND SCIENCE COLLEGE
At-Kurkundi, Post-Chargaon Tal: Sangamner Dist: Ahmednagar (Maharashtra)

Approved by- Govt. of Maharashtra
Affiliated to Savitribai Phule Pune University





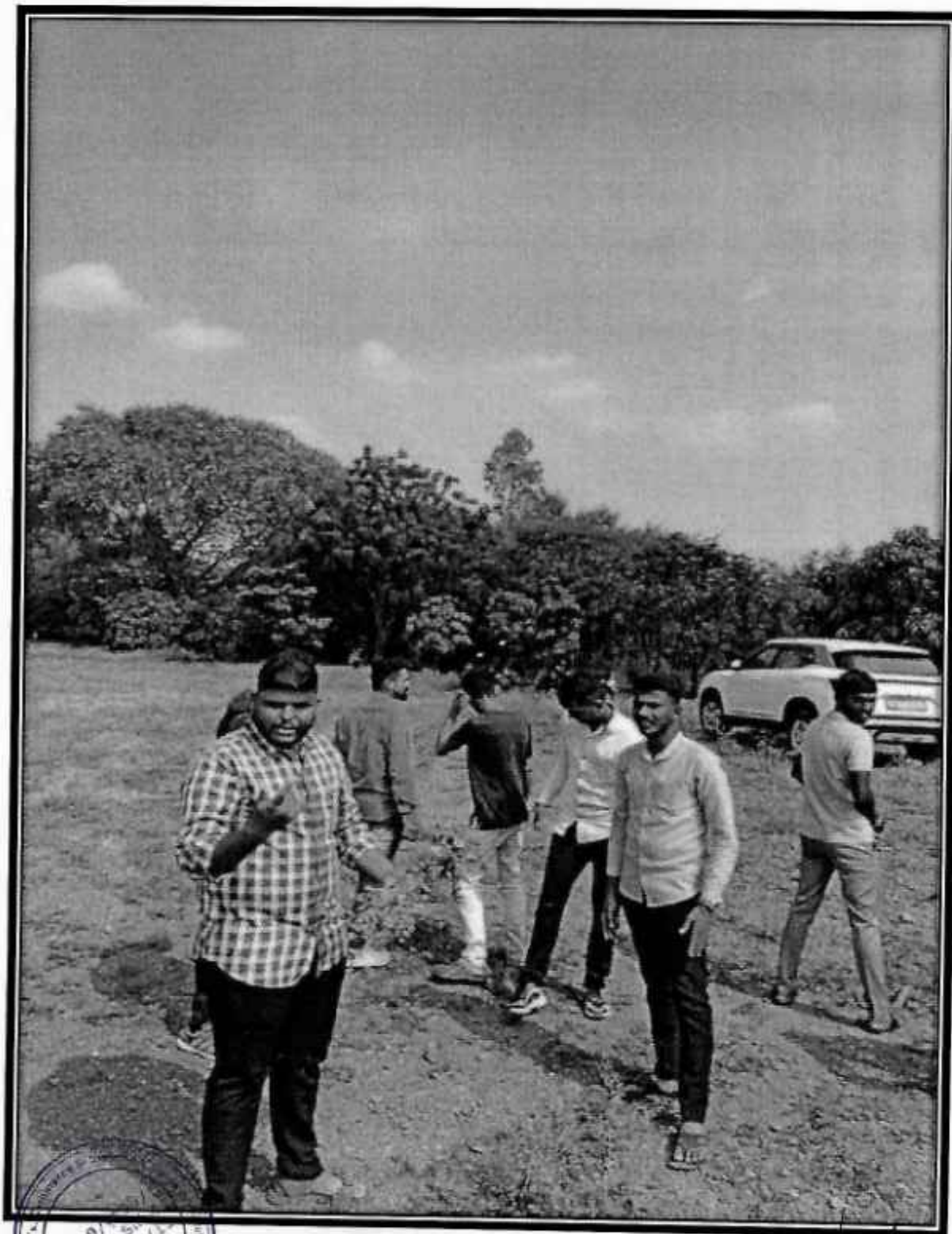
Late. Mhatarba Laxman Pa. Aher Pratishthan's

SITAI ART'S, COMMERCE AND SCIENCE COLLEGE

At-Kurkundi, Post-Ghargoan Ta: Sangamner Dist: Ahmednagar (Maharashtra)

Approved by- Govt. of Maharashtra

Affiliated to Savitribai Phule Pune University



[Handwritten Signature]

Principal

Sitai Art's, Commerce & Science College
At Kurkundi, Po. Ghargoan, Tal. Sangamner, Dist. A' Nagar